

# SUPERIAL 800 i+

## PANEL DOOR

**aliplast**  
aluminium systems



panel doors



### Superial 800 i+ Panel Door

- thermally insulated aluminium system used to design single-leaf panel doors
- the SP 800 i+ panel door system is a solution based on the SP 800 i+ door system, it features very good thermal insulation and new sealing solutions
- the leaf is adapted to the most popular double-sided bonded panel
- the system is compatible with the Superial door system
- the system features a wide range of filling panels, available in a variety of designs and colours; it is possible to use various shape milling cutters and decorative applications during the production – this allows the joinery to be customised to the individual style of the building
- wide range of colours – RAL palette (Qualicoat 1518), textured colours, Aliplast Wood Colour Effect – wood-like colours, Aliplast Loft View – colours imitating stone surfaces (Qualideco PL-0001), anodised colour (Qualanod 1808), bi-colour

# SUPERIAL 800 i+

## PANEL DOOR

**aliplast**  
aluminium systems

### panel doors

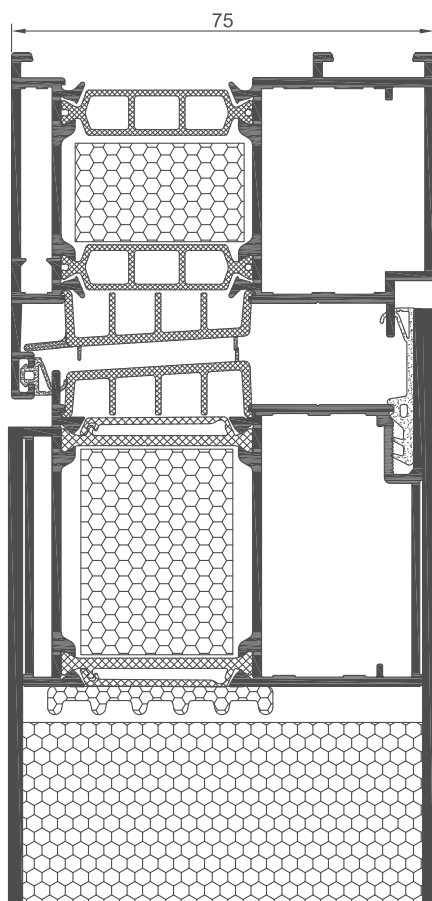
### technical specification

system	material	depth of frame	depth of sash	infill thickness	door type
PD SP 800 i+	aluminium / polyamide	75 mm	75.5 mm	75 mm	single of the outswing, inswing type

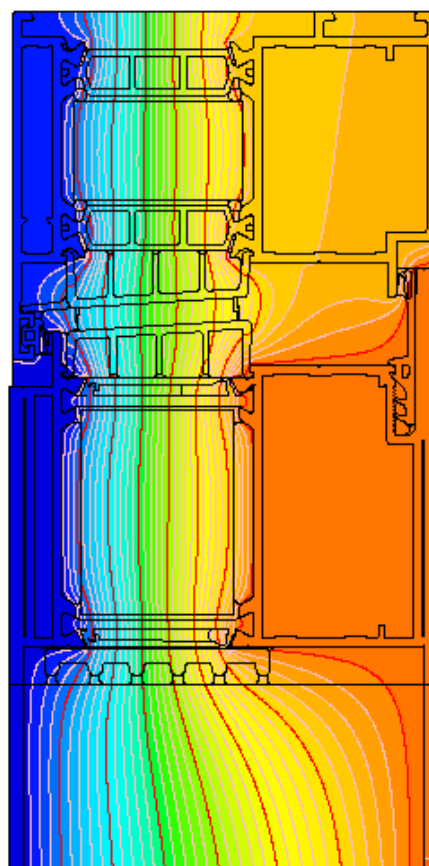
### performance

system	thermal insulation $U_f^*$	air permeability	windload resistance	watertightness
PD SP 800 i+	Ud from 1.60 W/m <sup>2</sup> K	Class 4; EN 12207	Class C5 (2000 Pa); EN 12210	Class 8A (450 Pa); EN 12208

\* Thermal insulation is dependent on a combination of profiles and thickness of the filling



cross-section of the PD SP 800i+ panel door with a double-sided panel  
(SP815 + SP1826)



example isotherm arrangement for the PD SP 800 i+ system  
(SP815 + SP1826)

**i** Aliplast Sp. z o.o. is not a manufacturer of overlay panels for panel doors and does not offer them for sale.